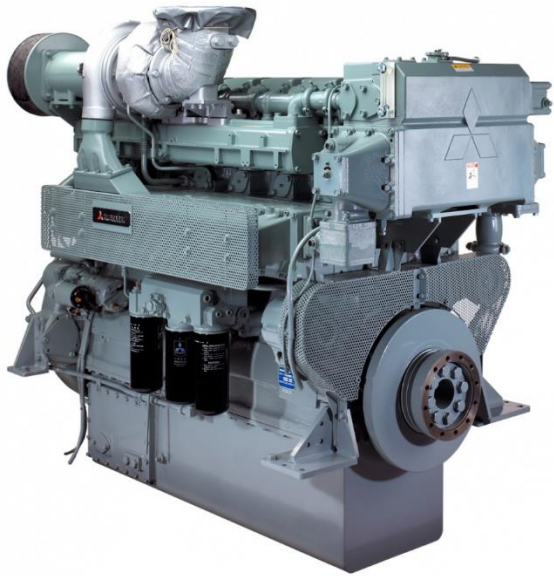


Marine Diesel Propulsion units of "PM" series are designed to drive the main propulsion system as well as auxiliary thrusters of all types of vessels. The propulsion units are equally applicable on the sea as well as river-based vessels. The production of the RD units implies usage of up-to-date gearboxes of worldwide known brands, such as TWIN DISC, ZF and others, as well as application of such couplings as VULKAN, CENTA and STROMAG. The propulsion units are equipped with monitoring and management systems, developed in-house by the technical department of RIGAS DIZELIS plant, in accordance with target customer needs and requirements of the classification societies.



Description & Key Scope

- Keel or heat exchanger cooling system
- Engine heater
- 24V starter, engine-driven charging alternator
- Flexible compensator and silencer
- Gearbox (ZF, TwinDisc, etc.) with different ratio available
- Flexible coupling between engine and gearbox
- Local and remote control panels
- Vibration isolators
- Drawing & Manual package
- Factory Test Report
- Certificates from major IACS members are available
- EIAPP certificate with Technical File
- Torsional Vibration Calculation

Engine type	Gross power, full load*, kW	Gross power, full load*, HP	Engine speed (rpm)	Power rating**	Preliminary dimensions in mm LxWxH / weight in kg	Emission***
S6B3-T2MPTAW	320 / 350	429 / 469	1940 / 2000	HD / MD	1466x939x1331 / 1310	IMO Tier II
S6A3-MPTAW	221/360/385	297/490/524	1530/1840/1800	HD / HD / LD	1878x971x1319 / 1800	IMO Tier II
S6R-MPTAW	324-470/520/605	440-639/707/823	1600/1650/1800	HD / MD / LD	1779x1128x1607 / 2830	IMO Tier II
S6R2-T2MPTK	324-480/530/610	440-653/721/830	1350/1400/1500	HD / MD / LD	1811x1108x1694 / 2960	IMO Tier II
S6R2-T2MPTAW3	460-555/645-691	626-755/877-940	1350/1400-1406	HD / MD	1779x1121x1695 / 2960	IMO Tier II

Description & Key Scope

* Power rated in accordance with ISO 3046-1 at ambient temperature of 45°C and sea water temperature 32°C

** Power rating:

- HD (Heavy Duty): Overload operation- not possible; Allowable average load factor- 100% or lower; Allowable average speed- 100% or lower; Allowable continuous operation with over 90% load- unlimited; Recommend Operating hour per year- unlimited.
- MD (Medium Duty): Overload operation- not possible; Allowable average load factor- 83% or lower; Allowable average speed- 94% or lower; Allowable continuous operation with over 90% load- up to 8 hr per 24 hr; Recommend Operating hour per year- 6000 hr.
- LD (Light Duty): Overload operation- not possible; Allowable average load factor- 75% or lower; Allowable average speed- 91% or lower; Allowable continuous operation with over 90% load- up to 1 hr per 6 hr; Recommend Operating hour per year- 3000 hr.

***IMO Tier III emission compliance is available on request.

Engine General Data*

Maker	MITSUBISHI				
Model	S6B3-T2MPTAW	S6A3-MPTAW	S6R-MPTAW	S6R2-T2MPTK	S6R2-T2MPTAW3
No of cylinders	6 in-line				
Working principle	4-stroke				
Displacement, L	14.6	18.56	24.51	29.96	29.96
Bore x stroke, mm	135 x 170	150 x 175	170 x 180	170 x220	170 x220
Compression ratio	14.2:1	14.5:1	14.5:1	14.0:1	14.5:1
Aspiration	Turbocharged, Inter Cooler				
Rotation	Counter clockwise (seen from flywheel end)				
Flywheel	SAE 14"	SAE 18"	SAE 18"	SAE 18"	SAE 18"
Injection pump	Bosch S7S Type x 1		Mitsubishi PS6 Type x 1		
Governor type	Hydraulic	Mechanical	Hydraulic	Hydraulic	Hydraulic
Oil capacity, liters	52-70	70-100	110-140	110-140	110-140
Starter type	2-pole, 24V, DC				

* Other engine parameters are available on request.

Available Key Options (other options are available on request)

Engine

- Radiator cooling system
- Manual or electric lub oil drain pump
- Starting batteries
- Static battery charger
- Air, spring or hydraulic starter
- Electronic governor

Gearbox

- Nonstandard ratios
- Trolling valves
- Power take off (PTO)
- Power take in (PTI)
- etc.

Other

- Special tools and spare parts
- Commissioning and start-up
- Extended warranty
- Propulsion lines (shafts, propellers, nozzles, thrusters, etc.)
- Deck mounted systems with Z-type azimuth thrusters



ANNO 1949

Address: 36 Ganību dambis, Rīga, Latvia, LV-1005
Telephone: +371 67391781, +371 67381626
Fax: +371 67381925
E-mail: sales@rigasdizelis.lv
Website: www.rigasdizelis.lv

All data presented in this document is informative and non-binding. All data in this document is for information only and may be changed without notice.
This document is the intellectual and industrial property of SIA RĪGAS DĪZELIS DG. This document may not be used in commercial or legal affairs without a prior legal and written authorization of SIA RĪGAS DĪZELIS DG.